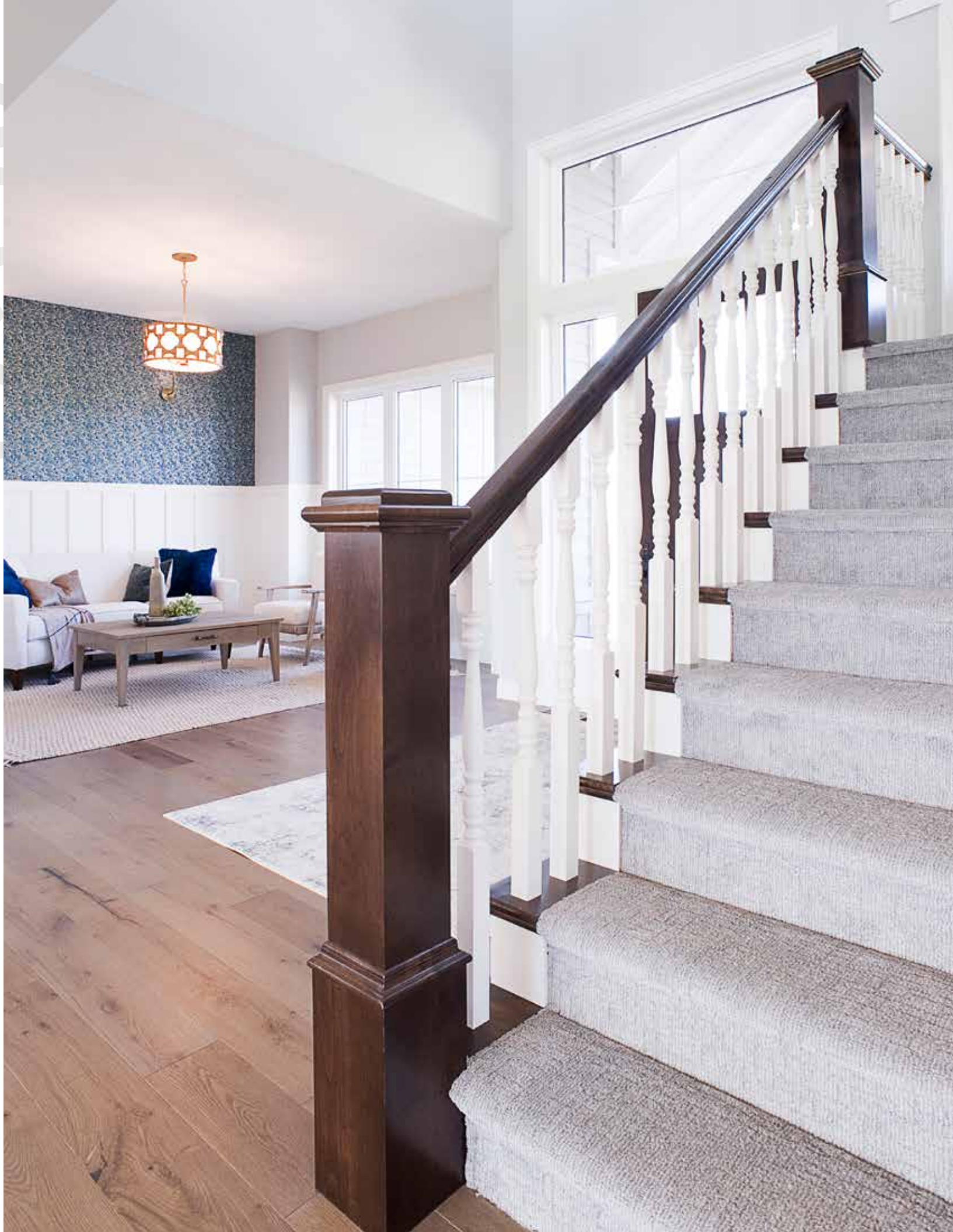


SOPHISTICATED

FARMHOUSE

No detail has been overlooked in this upscale home that mixes up the modern farmhouse aesthetic

By Kathie Pfaffle • Photography by CIPHER





Everywhere you look at 288 Central Park Court, you find ingenious creativity and elevated living. Situated in lovely Harrisburg and crafted by Dobesh Construction, no detail has been overlooked in this upscale home that mixes up the modern farmhouse aesthetic. Spacious but specific, this floorplan is intelligently laid out and offers the homeowner a place for everything while still maintaining a welcoming, homey feeling for those residing in or visiting the home. Greeting you upon arrival is a two-story home with an impressive exterior showcasing a perfect mixture of materials, large windows, a grand front entryway and porch and an ensuing feeling of wonder and awe.

Entering the residence is akin to stepping directly into an HGTV show, thanks to the ultra-custom finishes and detailing. From the flooring, which includes geothermal and in-

floor heating, and cabinetry choices to the light fixtures and paint colors, everything has been tailored to exude luxury and comfort. The entryway and stairwell to the second floor are one and the same with the two stories opening to both each other and the gathering spaces below and above. Tying them all together are striking, matching double chandeliers. Off of the entryway is a show-stopping space that could be a whiskey room, home office or a place for hosting guests. Featuring glass built-ins, a wet bar, both wallpaper and wainscoting, plus trendy and timeless brass light fixtures, this first taste of the home sets the stage for the rest of it.

Moving into the open concept living, dining and kitchen area, there is only one way to describe what you feel: breathtaking. Everywhere you turn, the spaces and their features feel intentionally placed and paired, and you can quite literally feel the builder's



Impeccable ability for execution. The oak wood flooring runs throughout this space and is warm, modern and pairs perfectly with the cabinetry and beam work. In the living room, you find a large gas fireplace with stacked stone and wainscoting flanked by white cabinetry, floating shelves, and sconce lighting. The large living room window lets in ample light and offers views of the backyard space. Backing up a bit, just off the living room is the home office, which makes work fun! Chic navy cabinetry topped with timeless white quartz, glass French doors, brass task lighting and cushiony carpet make this room one you will run to, even on your days off.

Back in the main space, the ability for hosting friends and family during holidays and special events is endless, thanks to a large kitchen with ample bar-seating plus the adjacent, spacious dining room. Storage, as well as beauty, is bountiful with two-toned cabinet colors, delicate but durable tile backsplash, both paired with a quartz that feels was produced solely for this kitchen, plus impeccable pendant and sconce lighting, and a cooktop with complementing double ovens. Something about the farmhouse sink just makes the heart flutter, with its sleek brass faucet, corner position, large windows to look out over while washing and the brass task lighting from above. Channeling one's inner chef is bound to happen in this space.





The kitchen's transition back into the drop zone space is seamless and configured for a busy but organized life thanks to the easy in-and-out drop zone and the additional storage space along the way. Also down this hallway is a large, walk-in pantry, with rustic gray tile flooring, and oh-so-much storage for small appliances, snacks and bulk buying. Next to the large locker storage is a gorgeous powder room draped in dainty but fun wallpaper and hip, bold finishes.

The second floor is laid out and designed in a way that is perfect

for a large and busy family. At the top of the landing, you find a quaint sitting area right outside the primary space, perfect for bedtime storytelling or simply sipping a nightcap. The primary ensuite shines with a large bedroom and killer bathroom. Light, bright and offering plenty of space are double vanities and the oh-so-loved combined shower and tub room with white marble walls, multiple shower heads and a deep soak tub. Rounding out the primary ensuite is the walk-in closet which features clever storage solutions for all one's personal belongings.

Right outside the primary is the large laundry room with ample cabinet and counter space, plus built-in drying racks, and a washer and dryer set. This proximity makes gathering and distributing laundry for the family a breeze! Down the hall are three lovely and airy bedrooms, all painted in a cohesive, whimsical color scheme: one soft pink, one baby blue, and one sage green, and all with large closets and double windows for natural light, just perfect for a kiddo's imagination and respite. Their main bathroom is spacious and functional with



beautiful metallic tile floors, double sink vanity, plenty of storage and a separate toilet/shower closet.

In the basement, you find another on-point space with a fifth bedroom, a possible sixth bedroom that can function as a workout space, plus a large family room complete with a wet bar, sleek gas fireplace with dark, moody shiplap and of course coveted built-ins. There is also additional storage space and a full bathroom. Out back, you will find a large covered composite deck, perfect for spending time outdoors entertaining or just enjoying mother nature.

Breathtaking is how we described this stunning home; there is no doubt that its craftsmanship and caliber will stand the test of time. Dobesh Construction representative Bryan Dobesh says their inspiration for the finish choices was the homeowner, and that the home was “designed and built with families and function in mind.” It is safe to say this custom home builder has truly outdone themselves and the new owners will enjoy a very happy, beautiful, fun and functional life at 288 Central Park Court.



dobesh
construction

605.310.3152

dobeshconst@outlook.com
dobeshconstruction.com